

TWILIGHT SERIES 8.25

The TS 8.25 has seating for 7 people and a very spacious foot area for people to stretch out. With dual therapy pumps and many standard features, the TS 8.25 will certainly enhance your life and how you feel.

| | |
|-------------------------------|--|
| Seating Capacity | 7 |
| Dimensions (inches/cm) | 94"x 94"x 38" (239 cm x 239 cm x 97 cm) |
| Gallons | 395 |
| Weight (Dry/Full) | 755 lbs. / 5,345 lbs. |
| Pumps | 2 |
| Number of Jets | 47 Jets (2 Master Blasters) |
| Water Features | 2 |
| Filtration | EcoPur® |
| LED Lighting | Orion Light System™ |
| Noise Reduction System | Standard |



Shown with optional Deluxe Fusion BT Sound System.

PREMIUM OPTIONS

Fusion Sound System, Wi-Fi Module, Afterglow Jet Package, QuietFlo Water Care System, Mast3rPur™ Water Management System*, Vac Formed ABS Pan Bottom



SKIRT OPTIONS

STANDARD DuraMaster Premium™

OPTIONAL DreamStone™

OPTIONAL MasterTech™
Premium Synthetic Skirting

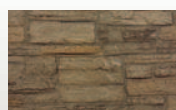
OPTIONAL DuraMaster II Ultra



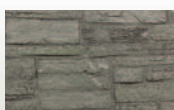
Portabella



Espresso



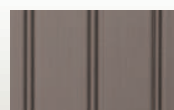
Desert



Granite



Walnut Grove



Driftwood



Black

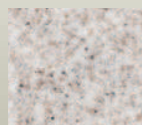
SHELL OPTIONS

STANDARD COLORS

PREMIUM COLORS



Sterling Silver



Sierra



Oceanwave Opal



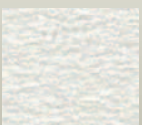
Midnight Canyon



Tuscan Sun



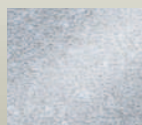
Storm Clouds



Cameo



Silk



Winter Solstice



www.TwilightSeriesSpas.com

*The Mast3rPur option is only available on hot tubs equipped with the QuietFlo Water Care System.