



**HEALTHY  
LIVING**  
HOT TUBS



## HL 616L

This Healthy Living Hot Tubs is the perfect solution for indoor use or to fit into tight quarters. Simply fill it up, plug it in and enjoy. Comes standard with a power cord including GFCI, ready for you to plug into any 120v outlet.

Dimensions:	78" x 66" x 32" (198 cm x 168 cm x 81 cm)
Weight (Dry/Full):	515 lbs. / 2,490 lbs.
Gallons:	170
Pumps:	1
Filtration:	EcoPur®
Number of Jets:	16
Seating Capacity:	3
Water Features:	1
LED Lighting:	Colorscape Light
Exclusive Feature:	Noise Reduction System

### SKIRT OPTIONS

#### STANDARD DuraMaster Premium™



Portabello

Espresso

#### OPTIONAL DreamStone™



Desert

Granite

#### OPTIONAL MasterTech™ Premium Synthetic Skirting



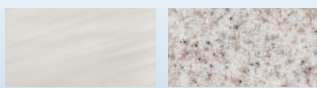
Walnut Grove

Driftwood



### SHELL OPTIONS

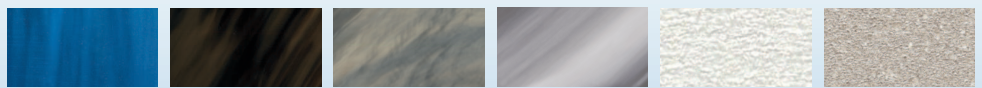
#### STANDARD COLORS



Sterling Silver

Sierra

#### PREMIUM COLORS



Oceanwave Opal

Midnight Canyon

Tuscan Sun

Storm Clouds

Cameo

Silk